

# Creaform 3D laser scanning marches across Australia



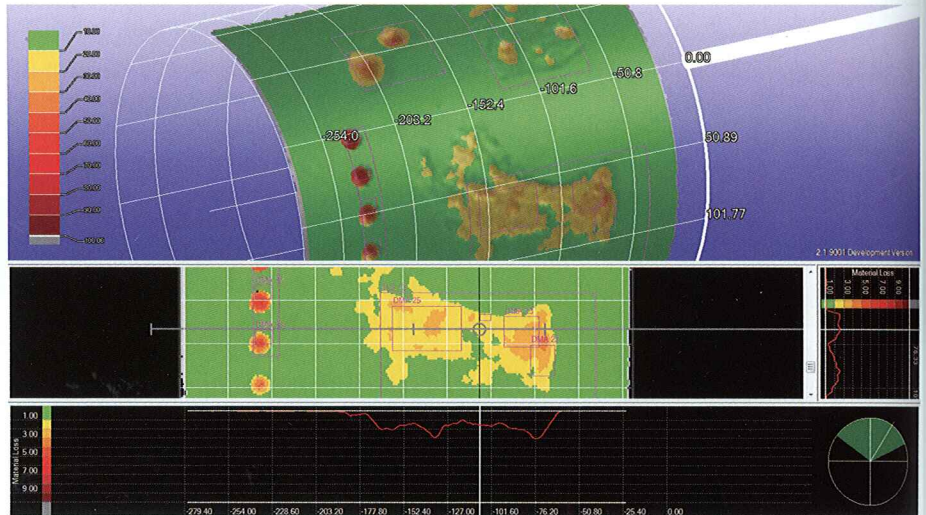
Creaform's pipecheck system is proving its speed and integrity of measurement through extensive use in the Australian pipeline industry, from Longford to Karratha, from Whyalla to Newcastle.

The system provides inspection rates up to ten times faster than pit gauging. At the completion of scanning, an Excel report with all calculated data and images for straight pipe sections can be produced for assessment or transmission to head office within two minutes. More complex geometries can take additional time using other software suites such as Geomagic or Polyworks.

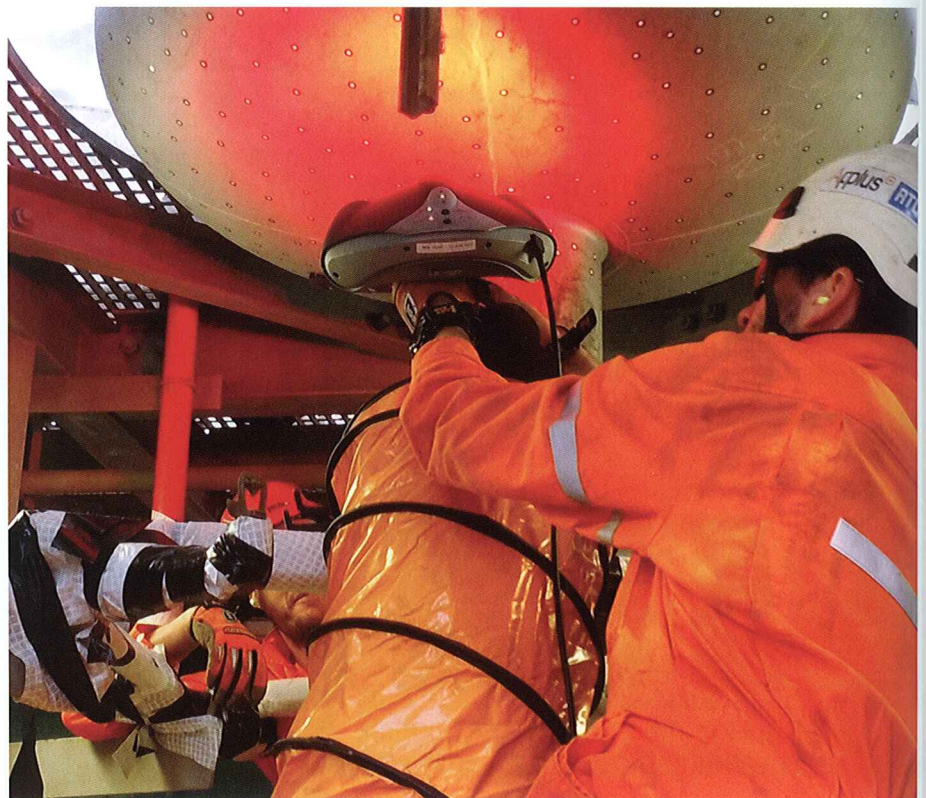
The data can also be uploaded into finite element analysis software packages. This can give results in hours rather than days. All raw data from the inspection is stored for any future interrogation or extraction of additional results or analysis at a later time.

Apart from external corrosion and mechanical damage analysis, Creaform's package can now analyse internal corrosion in tanks and pressure vessels when access allows.

Using accumulated statistical analysis, Creaform's results are being correlated to in-line inspection methods, such as magnetic flux leakage pigs, to validate this data for further decisions about dig-ups. In some instances only 60 per cent of areas that have been targeted for dig-up by a pig have actually been assessed as needing that exposure, which makes the Creaform 3D Pipecheck system a massive cost saver to asset owners. **P**



Combined view in-line inspection overlay.



Shut down inspection on a gas plant.

The data can also be uploaded into finite element analysis software packages. This can give results in hours rather than days.

For more information visit [www.rfsales.com.au](http://www.rfsales.com.au)

reduction scheme should be prepared for deployment in 2020. Such a scheme would influence the costs and output of existing and future generators and provide the market with clear signals that investment in low emissions electricity will be encouraged. Such a signal would also give shale and other gas project proponents sufficient confidence in the long-term viability of gas-fired power generation and assure them of a growing domestic demand to justify investment in gas supply. This would help to address the issue of co-ordination. Increased investment in unconventional gas is needed today, in order to influence gas supply in future years. That investment cannot occur unless there is confidence in future demand.

Such a policy would reduce uncertainty in the market, leading to more efficient investment outcomes. This policy would

also ensure delivery of the environmental benefits of gas as a clean energy source, addressing the need to reduce emissions across the electricity sector and in the economy in general.

The benefits of an emissions intensity scheme for the electricity sector post-2020 are three-fold:

- » Environmental benefits. In the current climate it is difficult to determine a dollar value for this benefit, but it is known that emissions reduction will remain an international issue. Policies and actions to reduce emissions and increase investment in emissions reduction practices today are useful and will increase in utility;
- » Investment efficiency benefits. Provides signals to the electricity sector in regard to the direction of future investment; and,

- » Increased gas supply development. Provides certainty to the gas supply sector that domestic markets for gas will continue to grow as long as combine cycle gas turbines remain competitive economically and on an emissions intensity basis. This would provide the basis for investment in gas projects today that might not begin supplying gas for several years. Increased gas supply development will help to mitigate the effects of the structural shift in the east Australian market, reducing long-term pricing pressures.

Additionally, there are a range of improvements to regulatory and administration regimes, including tenement management, taxation, land access and information, that should be considered to improve the overall efficiency of the regulatory environment for the gas sector. **P**

To view the full policy statement visit [www.apia.net.au](http://www.apia.net.au)

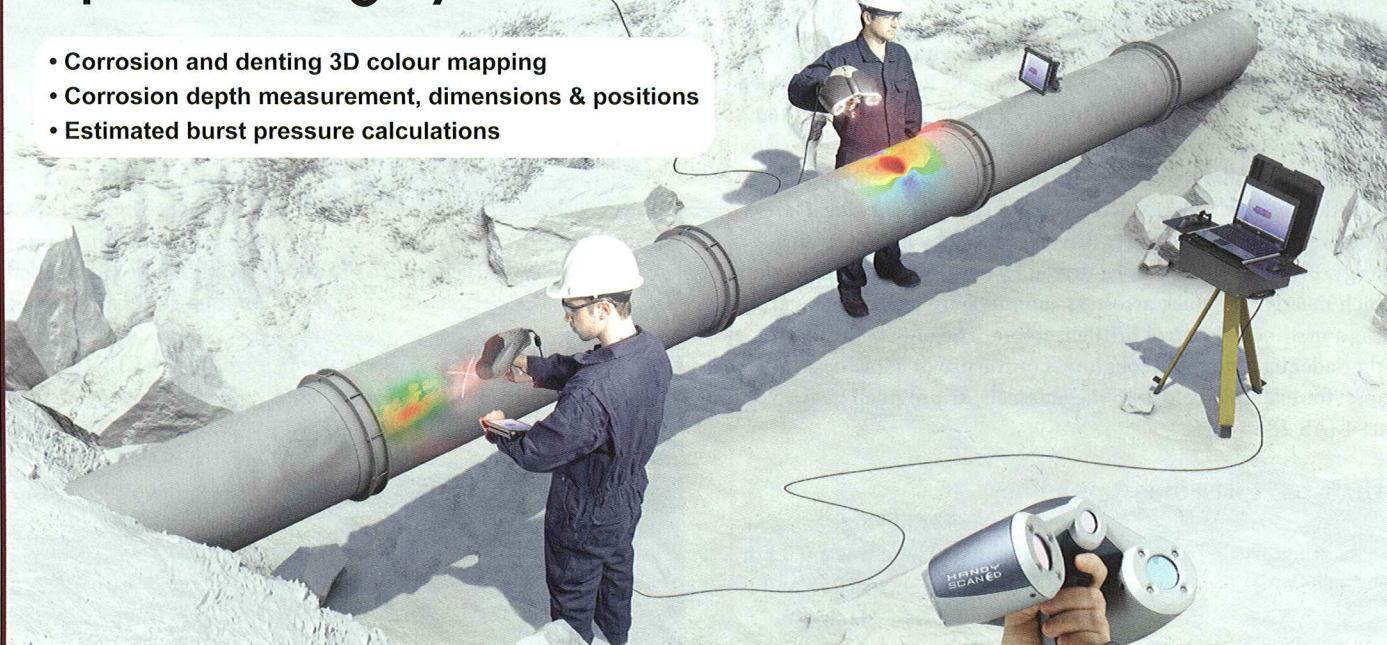
The Secretariat is happy to discuss any aspects of the report with APIA members.

The report will be used to guide APIA and member engagement with the numerous gas market studies and taskforces currently underway by Federal and state governments.

## 3D LASER SCANNING

### Pipeline Integrity Assessment

- Corrosion and denting 3D colour mapping
- Corrosion depth measurement, dimensions & positions
- Estimated burst pressure calculations



Contact the team at Russell Fraser Sales to request a quote today:  
Tel: 02 9545 4433 Fax: 02 9545 4218 Email: [rfs@rfsales.com.au](mailto:rfs@rfsales.com.au) Web: [www.rfsales.com.au](http://www.rfsales.com.au)  
Visit us on stands 56 & 57 at the APIA Convention & Exhibition, 2013



**CREAFORM**